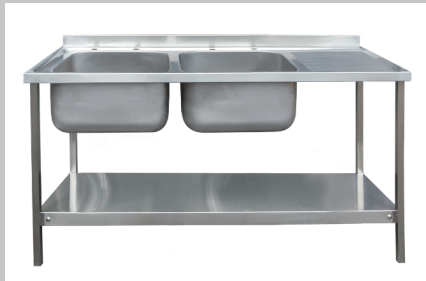




## Sink Unit Assemblies Single & Double Bowl



## Installation Instructions:

1. Individual legs are identified by coloured red, green, yellow and blue markers. These correspond with the positioning of the brackets attached to the sink unit
2. Place the corresponding leg over the window tag of the bracket (fig 1).
3. Ensure the leg is full seated to the bracket (fig 2)
4. Loosely locate the bolts (do not tighten) (fig 3)
5. Repeat for all corresponding leg to bracket colour schemes as per instruction #4
6. Mount the shelf to the legs and loosely locate the bolts (fig 4)
7. Once bolts are in-situ, tighten all bolts to the brackets and the shelf assembly before standing the unit upright (do not over tighten bolts)
8. Level the unit by adjusting the threaded insert feet where necessary

Fig 1



Fig 2



Fig 3



Fig 4



*Important:*

*Before installation please read & understand the instructions.*

*Installation, commissioning & maintenance must be performed by a technician qualified in accordance with legal requirements.*

## Contact Us

01327 311144

sales@die-pat.co.uk

www.die-pat.co.uk

## General

- Die-Pat accept no responsibility for loss or damage caused by poor installation or operator misuse.
- Do not use abrasive or acid based cleaning products.
- For general cleaning use soap or mild detergent and water.
- Please ensure appropriate PPE is used